

norstar system coordinator guide t7316e

Download norstar system coordinator guide t7316e



Our software is
100% SAFE
to download!

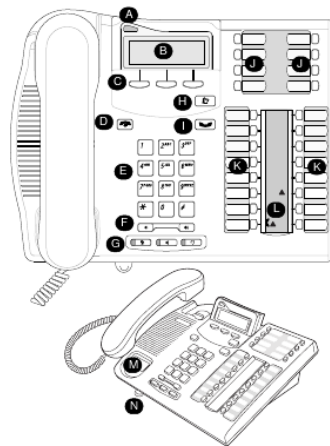


Spyware Free
Adware Free
Virus Free

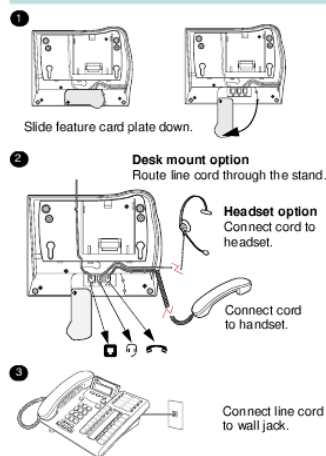


100%

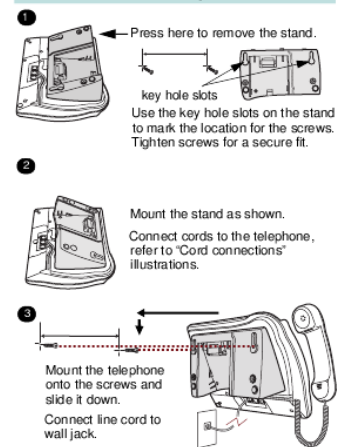
GUARANTEE
VIRUS FREE SOFTWARE



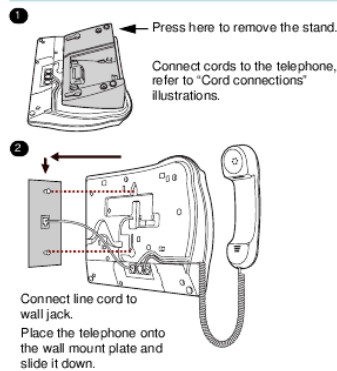
Cord connections



Wall mount with a telephone stand



Wall mount without a telephone stand



Telephone setup

- Display contrast level**
Adjust the contrast of your display.
1. Press **[] [] []**.
2. Press **UP** or **DOWN** to view the levels.
3. Press **OK** to select a level.
- Language choice**
[] [] [] []
Select Primary Language for the telephone display.
[] [] [] []
Select Alternate Language for the telephone display.
[] [] [] []
Select Alternate Language 2 for the telephone display.
[] [] [] []
Select Alternate Language 3 for the telephone display.
- Ring type**
Select a different ring for your telephone.
1. Press **[] [] [] []**.
2. Press **[] [] [] []**, or **NEXT** to hear the different ring types.
3. Press **OK** to store the ring type.

Your T7316E telephone

- A Telephone light**
Flashes for incoming calls. Lights up when Message Waiting Indication (MWI) is supported by system software. Contact your system administrator for more information.
- B Adjustable tilt display**
Shows the time and date, call and feature information.
- C Display buttons**
The label for display buttons appear in capital letters on the bottom of the display. Display buttons change with each feature you use.
-
- D Release button**
Ends an active call or feature.
- E Dial pad**
- F Volume control**
Adjusts the handset, handsfree, headset and ringer volume.

More on your T7316E telephone

- G Audio cluster buttons**
Mute button
Turns the microphone off or on when you are on a call.
Handsfree button
For more information on using the handsfree feature, refer to the "Handsfree calls" section in this card.
Headset button
Turns the headset mode on.
- H Feature button**
Starts or ends a feature.
- I Hold button**
Places calls on hold.
- J Memory buttons**
- K Memory and line buttons**
- L Indicators**
Appear next to active line and memory buttons.
- M Number card**
Write your extension number on this card.
- N Feature card plate**
Storage compartment for your feature card.

View and Download Nortel 6.1 owner s manual online. NORTEL Owner s Manual Compact ICS 6.1 System Coordinator. 6.1 Telephone pdf manual download.

Welcome to the Nortel Telephone Manuals Page. Please select your Nortel Product from below. BCM 50 | CS1000 | Norstar Compact ICS | Norstar Modular ICS | Option 11C.

MyUserGuides.com is not affiliated with Aastra, Avaya, Cisco or Nortel. All trademarks are property of their respective owners. This website is a free service.

Manuals and guides for Nortel Networks Norstar Phone Systems Guides Manuals User Cards and Quick Reference Guides

View and Download Nortel T24 installation instructions online. Nortel T24: Installation Instruction. T24 Telephone pdf manual download.

Avaya IP Office 1120E User Guide. Avaya IP Office 1140E User Guide. Avaya IP Office 1403 user en.
Avaya IP Office 1408 1416 User Guide. Avaya IP Office 1603 User Guide

Meridian phones norstar nortel phone callpilot telephones BCM voicemail phone systems manuals
power supplies brackets cards cords handsets batteries battery.